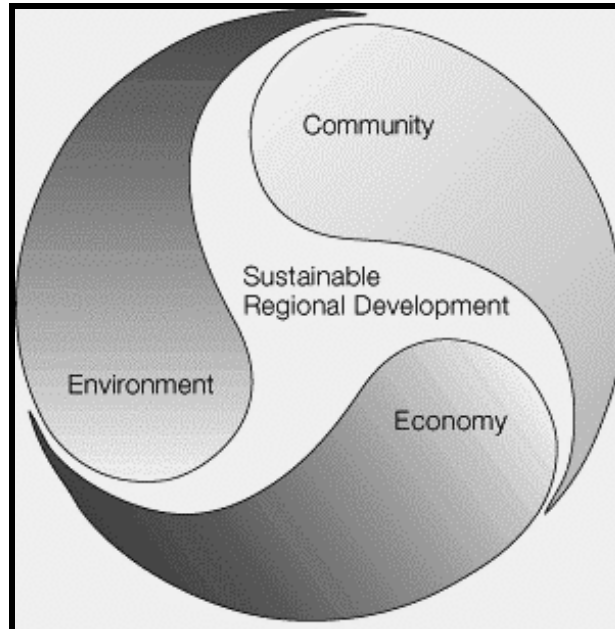


“SEQ NR&EM Regional Body”

(Proposed Arrangements)



The Working Group coordinating the establishment of a Regional Body for South East Queensland Natural Resource and Environmental Management (NR&EM) invites your comments and feedback on the NR&EM regional arrangements for SEQ. This paper provides details of the SEQ region, the proposed legal entity, membership categories, the Regional Board, nomination and assessment processes, linkages to existing structures and the formation of the Regional Body.

The Working Group will be holding public workshops in early October across the SEQ Region to gather comments and feedback from all NR&EM stakeholders. We need your involvement, experience, expertise and comments so that we can move forward and initiate the formation of the SEQ NR&EM Regional Body in November 2002.

The closing date for receipt of comments is: October 21st, 2002.

Your comments should be addressed to:

***Jacky Williams
SEQ NR&EM Working Group
GPO 1434
Brisbane Qld 4001***

1. Progress to date on SEQ NR&EM arrangements

The SEQ NR&EM Working Group has been working towards the development of new arrangements for Natural Resource & Environmental Management since late 2001. The Working Group, which consists of key representatives of NR&EM stakeholders in South East Queensland, has provided a forum for stakeholders and facilitated communications, information and meetings to progress the foreshadowed new regional arrangements.

To date the SEQ NR&EM Working Group has:

- Appointed an interim Project Manager to support the Working Group activities
- Distributed an NHT2 update and a SEQ NR&EM update newsletter to stakeholders in the region
- Published in May 2002 a discussion paper on regional arrangements
- Held 8 public meetings in the sub-regions of SEQ during June 2002
- Secured additional funding from Queensland Department of Natural Resources & Mines (DNR&M) and SEQROC for Working Group activities
- Held a workshop of regional stakeholders to develop the draft model.

The SEQ NR&EM Working Group identified a number of “givens” to guide the way for the development of the new regional NR&EM arrangements. These givens are sourced from the requirements of various funding programs, feedback from consultation and from the bilateral agreements between the Queensland State Government and the Commonwealth for NHT2 and NAP (National Action Plan for Salinity and Water Quality). The “givens” identified are:

- The Regional Body is to be a legal entity
- Members are required to have appropriate skills and capacity
- Balanced membership: balancing production and conservation interests and including local government and indigenous interests
- Majority community membership
- Skills to develop and implement NR&EM plans
- Financial management responsibilities
- Links to other investment planning
- Consultation with all key stakeholders and valuing comments from public consultation
- Consistent with other NR&EM planning approaches
- Build on what we have
- Voluntary not mandatory
- Liaison with State and other agencies
- State agencies as observers only (decision by Queensland Government)
- Ensures public access to information regarding decisions by body (i.e. priority setting and finances)
- Bound by bilateral agreements conditions for NAP & NHT2
- Accreditation of plan: Commonwealth criteria and State developed guidelines
- Communication strategy and linkage to existing structures.

Common themes identified from feedback to the discussion paper and from stakeholder participation also provided the SEQ NR&EM Working Group with guidance on the development of new regional NR&EM arrangements.

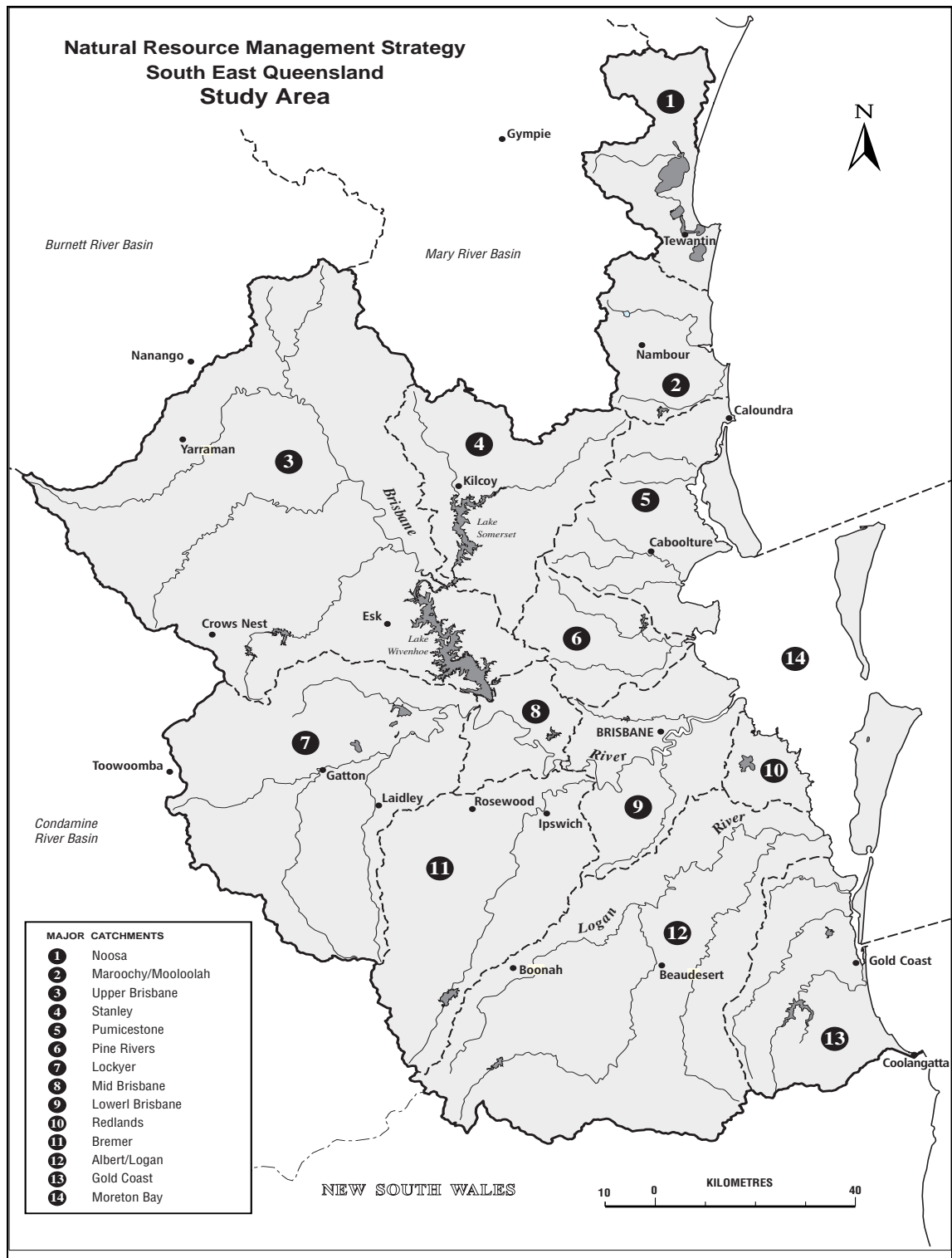
The common themes included:

- Communications is the main driver
- Capacity building of group to foster the delivery of NR&EM outcomes
- Ownership
- Priority issues and funding availability
- Sub-regional basis: geographic representation basis with small membership
- Suite of characteristics needed in body
- What will be the basis of membership?
- Time frames for membership: rotation
- What constitutes membership?
- Need government and community endorsement
- Relationships with other bodies
- Existing bodies have a dominant membership on the body based on organisational membership
- Business development function
- Role: capacity building
- Open process: who selects the selection/interview panel?
- Who does the body report to? multiple interests
- To provide a common voice on natural resource and environmental management
- Need for overall regional coordination body
- Regional body has a coordinating role.

This paper, being the proposal for the SEQ NR&EM Regional Body, provides the final stage of the SEQ NR&EM Working Group activities. Details of the SEQ region, legal entity, membership categories and linkages with existing bodies and arrangements are provided for your comment.

2. The Regional Body

The SEQ NR&EM Regional Body will cover all the catchments in the SEQ Regions (including the catchments of Noosa, Maroochy-Mooloolah, Upper Brisbane, Stanley, Pumicestone, Pine, Lockyer, Mid Brisbane, Lower Brisbane, Redlands, Bremer, Albert-Logan, Gold Coast and Moreton Bay). **This region also includes the State Coastal Waters and tidal lands from Noosa (Laguna Bay) to Tweed Heads including: The Broadwater, Pumicestone Passage/Bribie Island, offshore and Moreton Bay Islands.** These areas are hereinafter referred to as the “SEQ NR&EM Region” (See Figure 1). To ensure an inclusive and coordinated approach to NR&EM planning and implementation, the SEQ NR&EM Regional Body, whilst based on the 13 catchments of SEQ and Moreton Bay, will also recognise and make arrangements with agreed areas adjoining the SEQ NR&EM region, such as Cooloola Coast and other identified areas as required.



**Figure 1: SEQ NR&EM Region
(State coastal waters not shown on map)**

The aims of the SEQ Regional NR&EM body are:

- To foster, promote and coordinate the integrated management of natural resources so that south east Queensland will be a caring community, sustainably using, enjoying and understanding the region's natural resources, beauty and biodiversity, both now and in the future.
- To understand, value and conserve South East Queensland's rich biodiversity through cooperative processes, so that it thrives and continues to underpin improved ecological, economic, social and cultural well-being, and allows the Traditional Owners to continue their living culture until the end of time.

The NR&EM Regional Body will work in partnership with Local Governments and State Agencies to achieve its aims and the formal government accreditation of the Regional NR&EM Plan. While State Agencies will not be voting members they will be involved in all aspects of the association's activities in an advisory and supporting role. The Queensland State Government has established a policy position that there would be a conflict of interest for State Government officers to hold ordinary membership on either the Regional Body or Board. The Queensland State Government wishes, however, to provide a support role as an affiliate member and through membership of associated advisory and technical panels.

It is proposed that the SEQ NR&EM Regional Body be comprised of two types of membership, namely ordinary and affiliate. This builds on the principles of membership of Catchment Coordinating Committees within SEQ, the SEQ Western Catchments Group and other NR&EM groups in the region.

The base membership (ordinary members) of the SEQ NR&EM Regional Body is to come from regional or sub-regional organisation "categories" being:

- ICM/Landcare
- Environment
- Local Government
- Research/Education
- Traditional Owners
- Coastal and Marine
- Industry (including infrastructure, business, rural, marine and urban enterprises and organisations including marine)
- SEQ (NAP) Western Catchments Group.

The Regional Board or management committee of the SEQ NR&EM Regional Body will be nominated by ordinary members. Ordinary members can nominate for category Board positions. Affiliate members can be involved in the various advisory committees and working groups of the association. All members will receive regular updates on and invitations to activities of the association.

The objectives of the SEQ NR&EM Regional Body include:

- To carry out the roles and functions of a Regional Body for the planning and implementation of integrated natural resource and environmental management in the SEQ NR&EM region, and other areas as agreed to by the Association.
- To provide a common voice to articulate to decision makers and the wider community, natural resource and environmental management issues of mutual concern.
- To promote the continued involvement of Traditional Owners and other land managers in integrated natural resource and environmental management in the SEQ NR&EM region.
- To develop the regional NR&EM Plan and act as a conduit for funding, including NHT2 and other funding sources to achieve the objectives of the NR&EM Body.
- To provide a means for representatives from the whole community to develop, prioritise, coordinate and implement integrated natural resource and environmental management activities in the SEQ NR&EM region.
- To formulate and implement policies and strategies that support coordinated natural resource and environmental management; being mindful of the associated environmental, social and economic issues and impacts on such policies and strategies.
- To foster cooperation amongst members and with State Government on natural resource and environmental management issues of mutual concern, and to further joint interests.
- To influence the decisions of governments, industry, community groups and individuals on matters relating to natural resource and environmental management in the south-east Queensland NR&EM region.
- To promote, through sound natural resource and environmental planning, sustainable management of the SEQ NR&EM region.
- To liaise and cooperate with adjoining regional bodies and other areas as identified.
- To provide a long term framework for communities to work together on natural resource and environmental management.
- To provide an integrated regional scale approach to resource management and biodiversity conservation including integration of coastal and marine issues and priorities.
- To link and integrate with other regional planning and resource management strategies, and strategies and policies developed at the regional, state, national and international level.

3. The legal structure

The SEQ NR&EM Regional Body is to be an Incorporated Association with the powers to attract tax-deductible donations. The Incorporated Association legal structure is the preferred legal entity as it is a simpler process (both legally and financially) than establishing a Cooperative. The constitution and incorporation of the SEQ NR&EM Regional Body will be undertaken once the body is formed in November 2002.

4. Membership

4.1 Ordinary members

Within the SEQ NR&EM Regional Body ordinary members *are recognised as being regional or sub-regional organisations with an interest in NR&EM and biodiversity who can assist the body to achieve its aims*. Ordinary members have voting rights and have the capacity to nominate a person for consideration for Board membership (i.e. the management committee).

Selection criteria for ordinary members are:

- Must identify as one of the eight categories of ordinary members being: ICM/Landcare; Environment; Local Government; Research/Education; Coastal and Marine; Traditional Owners; Industry and SEQ Western Catchments Group;
- Be a regional or sub regional organisation; or
- Recognised as a regional or sub regional organisation by other organisations under other arrangements:
 - Local Governments under the Local Government Act
 - ICM/Landcare Groups
 - Traditional Owner Groups as recognised by TOAG
 - Recognised and accredited research/educational organisation
 - Recognised as a regional/sub regional industry body
 - Recognised as a regional/subregional coastal and marine body
 - Body accredited under NAP i.e. SEQ Western Catchments Group;
- Have an interest in Natural Resource and Environmental Management or an interest in biodiversity;
- Have networking capacity to assist the association;
- Be able to work on a whole-of-catchment basis (catchment must be one of the 13 SEQ catchments); or
- Work across sub regions and/or Local Government boundaries.

Table 1 provides a list of organisations/groups to date who have expressed an interest in becoming an ordinary member of the SEQ NR&EM Regional Body.

Local Governments of SEQ
SEQ Western Catchments Group
ICM/Landcare groups
Member organisations of QFF
Agforce
Moreton Bay Waterways & Catchments Partnership
Coastal and Marine organisations
Traditional Owner groups
SEQ Farm Forestry organisations
Commerce Queensland
Marine industries
Rural industries
Urban industries
Nature Based Recreational groups
Environment organisations
Rural Producer groups
Coastcare/Fishcare groups
Research and Educational bodies

Table 1

This list of possible ordinary members is not exclusive; there are many other potential ordinary members within the SEQ NR&EM Region. Additional ordinary members will be identified through the consultation and formation process of the SEQ NR&EM Regional Body to be undertaken in October 2002.

Ordinary members have voting rights and can nominate a Board member for the appropriate membership category for the Regional NR&EM Board. Ordinary members within any category are responsible for nominating their representative to the Board. It is proposed that Board members be elected for a two-year term with a maximum of two consecutive terms.

Selection criteria for membership on the Regional NR&EM Board are:

- Explicit links to Western Catchments Group through membership and role;
- Linkages with Moreton Bay Waterways and Catchments Partnerships (MBWCP) Implementation Groups;
- Members selected on skills and geographic spread;
- Capacity, skills and expertise to fulfill the roles of the SEQ NR&EM Body;
- Membership to provide a balance of NR&EM interests in the region and to contain appropriate expertise in NR&EM including economic, social and coastal and marine;
- Knowledge and contact with sub-regions;
- Research/Education nominee must come from the SEQ Science Advisory Panel.

4.2 Affiliate members

Affiliate members can be any group or individual, locally based rather than regional or sub regional in nature. This would include local organizations, industry groups, smaller groups and individuals with an interest in NR&EM and biodiversity. Affiliate members do not have voting rights but must abide by the aims, objectives and rules of the SEQ NR&EM Regional Body.

Examples of potential affiliate members include:

- Individual Landcare groups
- Individual Waterwatch groups
- Interest/focus groups of 5 or more individuals, either incorporated or unincorporated
- Water Boards
- State agencies (with their observer status)
- Other smaller groups
- Individual Bushcare groups
- Local community organisations
- Small and medium sized enterprises
- Individuals
- Landholders

To ensure that all NR&EM stakeholders are kept involved and informed, Regional Board General meetings will be open to attendance by affiliate members, ordinary members and the general public.

4.3 Board membership

The SEQ Regional NR&EM Board is the Management Committee of the SEQ NR&EM Regional Body. The Regional Board will oversee the development and implementation of the SEQ NR&EM Plan.

Ordinary members shall nominate and select regional Board Members from their respective category. The Chair and other executive positions are to be elected by the Board from within the Board membership.

To ensure geographic and skills representation on the Board it is required to have a regional and sub-regional approach to membership based on the ordinary member categories and their mode of business.

The Board will have a total of 22 members drawn from the following group categories:

- **5 members nominated by Local Government on a sub regional representative basis**
- **1 University/Research Organization**
- **13 NGO's:**
 - **2 from environment (marine/coastal & terrestrial) covering the whole SEQ region**
 - **5 ICM/Landcare from sub regional Moreton Bay Waterways and Catchments Partnership Implementation Group areas**
 - **4 Industry covering the whole SEQ region being 2 Rural, 1 Urban and 1 coastal & marine**
 - **2 marine and coastal from sub regional representation**
- **2 Traditional Owners**
- **1 SEQ Western Catchments Group**

5. Linkages to existing structures & arrangements

The proposed model for SEQ NR&EM Regional Arrangements provides linkages to existing structures through ordinary and affiliate membership, reporting, agreements and also through a number of proposed support groups which will support the NR&EM Regional Body and facilitate public and stakeholder involvement. The proposed groups include:

- *Monitoring Group*: to provide experience in developing, assessing, implementing and reviewing plans, projects and audits, and in evaluation of NR&EM in SEQ.
- *Science Group*: consisting of a Science Advisory Panel, which would facilitate access to appropriate scientific expertise.
- *Advisory Groups*: this would involve various advisory groups including Traditional Owners to provide advice and facilitate public involvement.
- *Strategy Group*: to provide guidance and support for the development of the NR&EM Plan and Investment Strategy.

These proposed support groups are indicative only of the types of support needed by the Regional Body and the final structure will be dependent on needs as determined by the newly formed SEQ NR&EM Regional Body. Where appropriate, these support groups will build on existing arrangements.

The SEQ NR&EM Regional Body will also seek endorsement of the Regional NR&EM Plan by RCC and RFGM. Figure 2 illustrates the linkages to existing structures and arrangements.

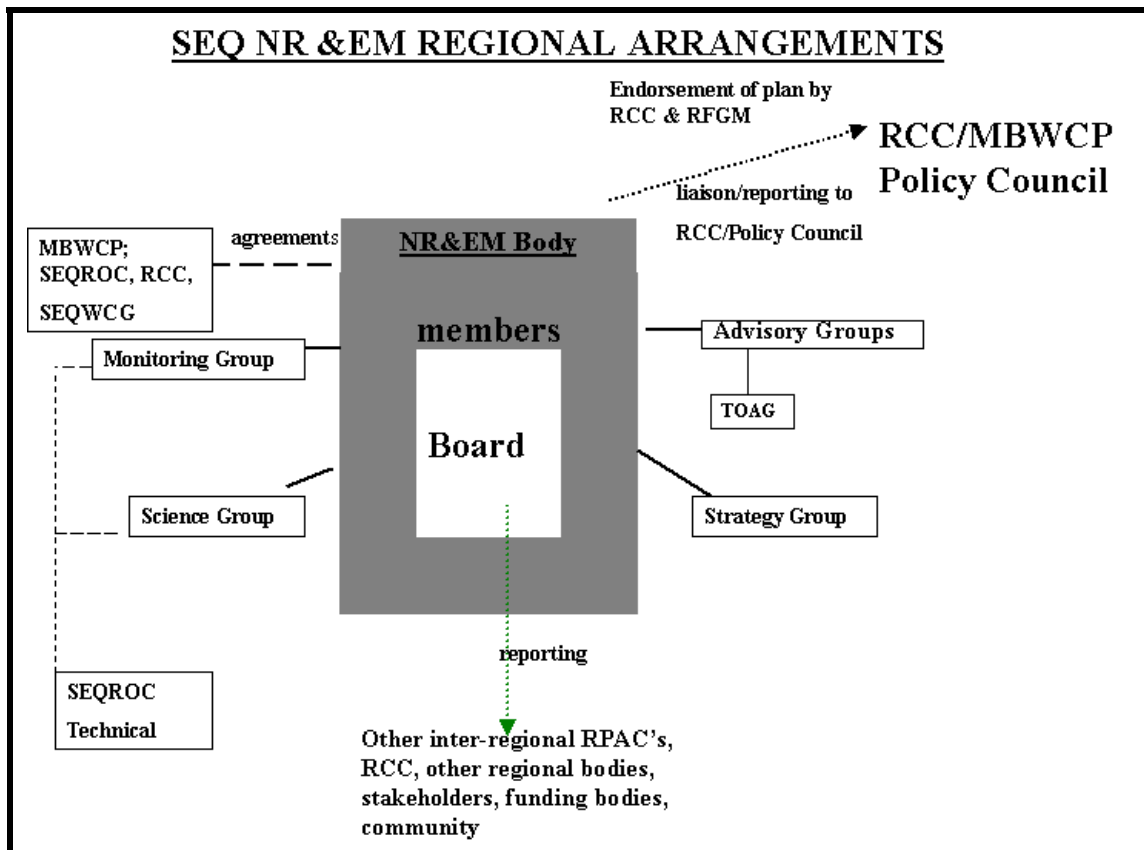


Figure 2: Proposed regional arrangements and linkages to existing structures

Whilst it is recognised that the SEQ NR&EM Regional Body will be an Incorporated Association with reporting requirements only to its members, associated funding bodies, and the Office of Fair Trading, it is proposed that the Regional Body report and liaise with the RCC, the Moreton Bay Waterways and Catchments Partnership Policy Council and other relevant bodies. This is to ensure that a coordinated, cooperative approach to NR&EM planning and implementation is achieved and to ensure that effective communications are established and maintained.

6. Proposed timelines for formation of SEQ NR&EM Regional Body

To further develop the NR&EM Regional Arrangements the Working Group will hold 9 public meetings across the SEQ region during early October to gather feedback and comments on the proposed regional arrangements.

To further progress the arrangements, the SEQ NR&EM Working Group propose to hold an initial formation meeting in November 2002 to establish the Regional Body.

The SEQ NR&EM Working Group will invite expressions of interest from NR&EM stakeholders for all categories of membership before the formation meeting in November 2002. Nominations forms for ordinary membership, Board membership and affiliate membership will be provided. Applications for each category of membership will be required to address the selection criteria.

A small Selection Panel will assess the ordinary membership applications for the formation meeting. It is anticipated that stakeholder groups would organise a representative from their groups/networks for membership on the Regional Board for the formation meeting.

Once the new Regional Body for SEQ is established, the SEQ NR&EM Working Group will dissolve, as the task of the group in facilitating the new regional NR&EM arrangements for SEQ will have been achieved. The SEQ Regional Strategy Group (RSG) will also dissolve on the establishment of the new regional body, recognising that the new SEQ NR&EM Regional Body extends the work of the RSG.

Acronyms

SEQROC:	South East Queensland Regional Organisation of Councils
ICM:	Integrated Catchment Management
NR&EM:	Natural Resource and Environmental Management
RCC:	Regional Coordinating Committee SEQ2021
DNR&M:	Queensland Department of Natural Resources and Mines
NAP:	National Action Plan for Salinity and Water Quality
RSG:	Regional Strategy Group
TOAG:	Traditional Owners Advisory Group
NHT:	Natural Heritage Trust
MBWCP:	Moreton Bay Waterways and Catchments Partnership
SEQWCG:	South East Queensland Western Catchments Group